

# PRINT PHOTOS FROM YOUR PHONE

Set your Wi-Fi connection to:

**1** **.Selfone\_WiFi\_Print** 

\*If your browser opens automatically, tap "Start Application" and follow instructions.

\*If no browser opens, proceed to Step 2

**2** **iPhone**

Open Safari browser and start application



**Android**

Open Android browser and start application



\*For other internet browsers, go to any webpage that starts with <http://> (not [https](https://))

**3** Follow on-screen instructions to select photo from your phone, or take a new picture to print.



SELFONE WIRELESS PRINT STATION™

MODEL  
**D90-WIFI-1**

## INSTALLATION SETUP

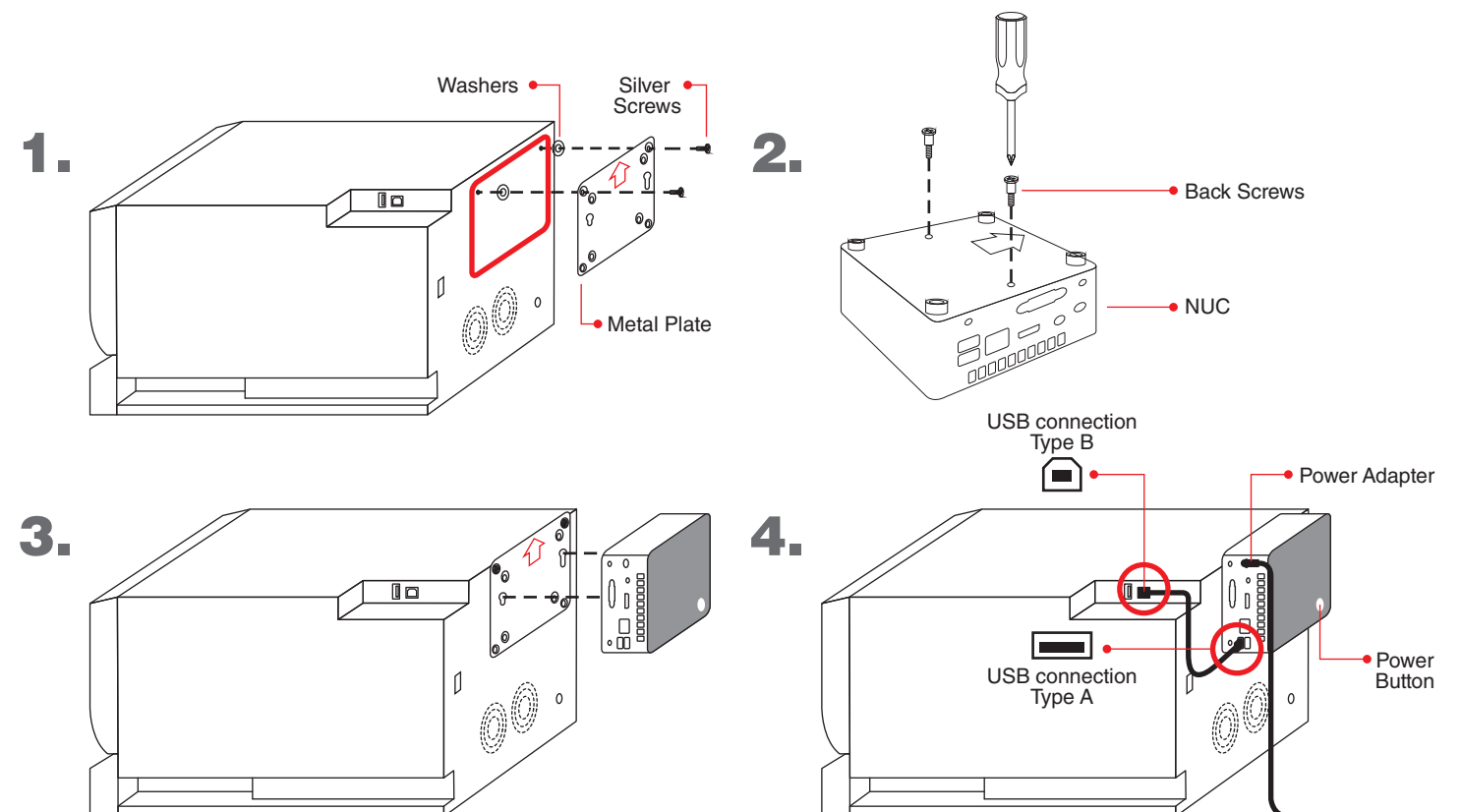
### Assembly

1. Attach metal plate to the back of the D90 printer using (2) silver screws. (Note: Make sure to point arrow up on metal plate)
2. Attach black screw to the back of the NUC.
3. Insert NUC with attached screws to the metal plate on the back of the D90 printer.
4. Connect USB Cable to the D90 printer and power adapter to the NUC.
5. Plug NUC to an outlet and press power button on the NUC.

\*Make sure D90 Printer power is on before powering up the NUC.

### Parts List

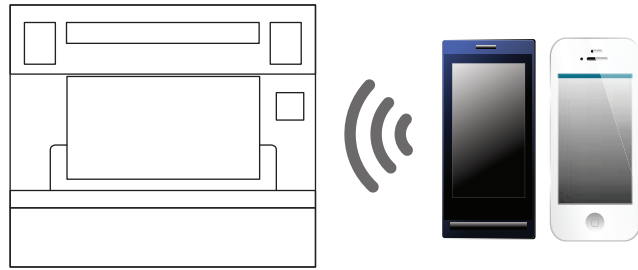
Contents	Qty.	Description
NUC	1	Wireless device
1 Ft. USB Cable	1	Connection to D90 printer
Power Adapter	1	Connection to power
Metal Plate	1	Attaches to the NUC
Black Screws	2	Screw hooks to for the NUC
Silver Screws	2	Screws for metal plate
Washer	2	Washers for metal plate
Installation Set-up Guide	1	QRef Manual
Manual	4	Intel Manual



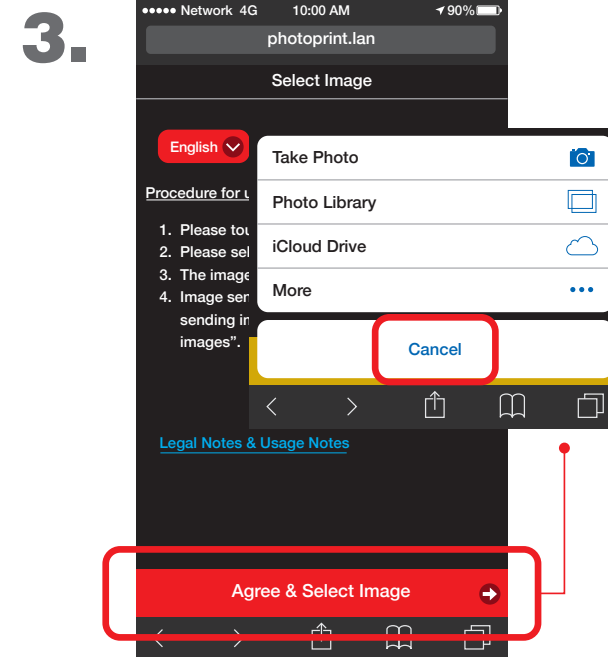
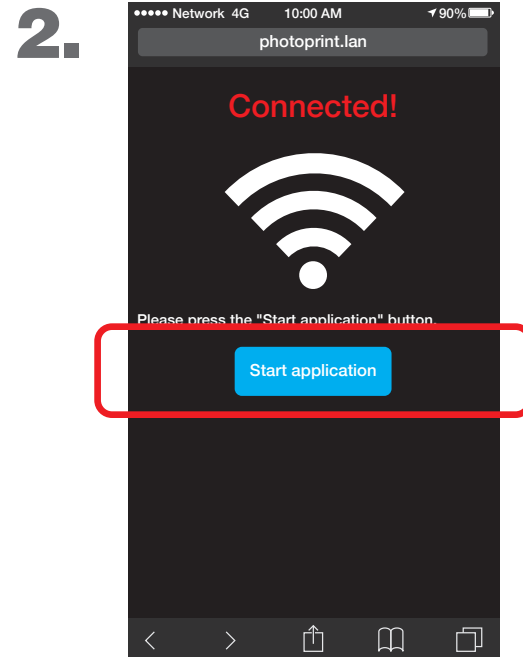
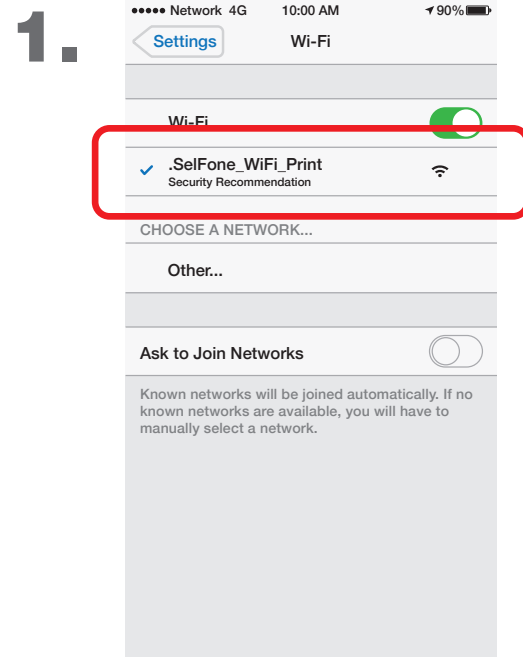
# INSTALLATION SETUP

## Wi-Fi Setup

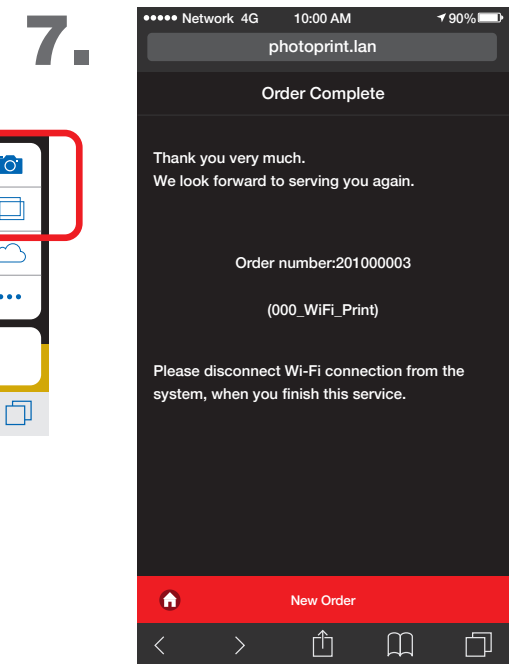
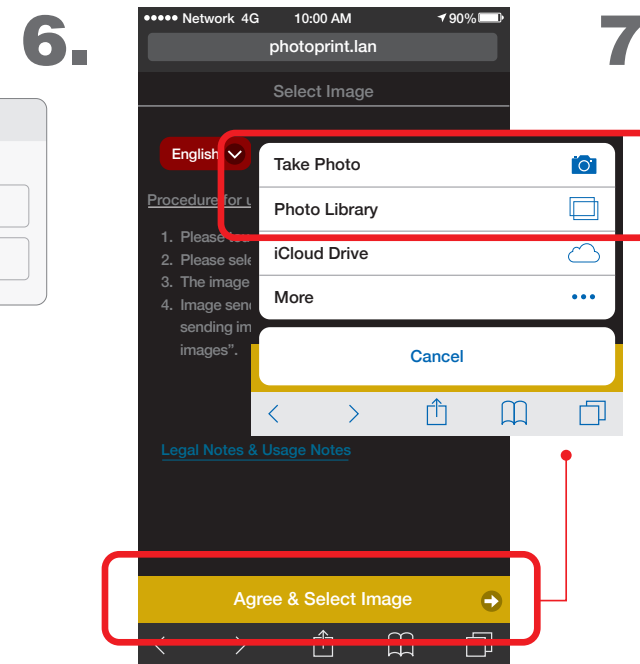
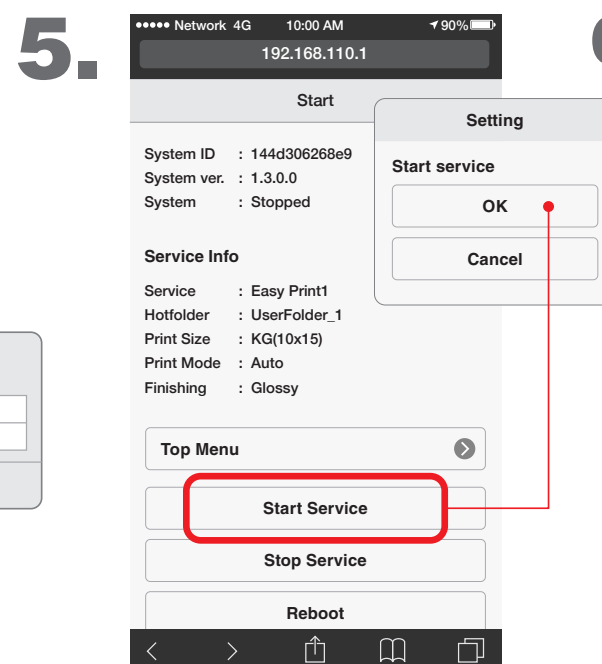
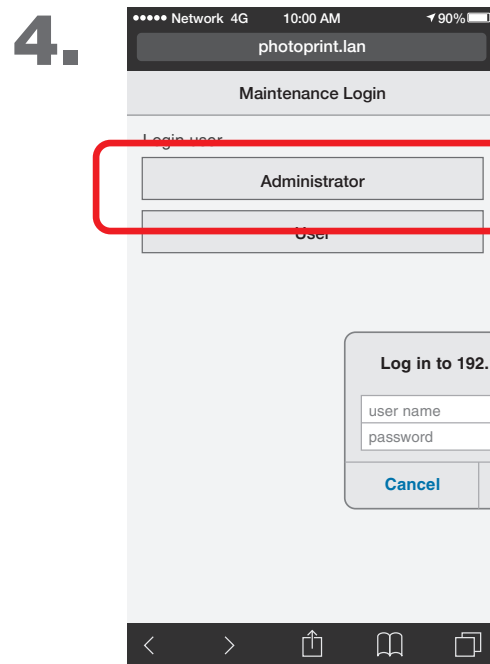
Connect Smart Phone/Tablet to the Selfone Wireless Print Station™ application.



1. Open Smart Phone/Tablet Wi-Fi setting. Connect to: **.SelfOne\_Wi-Fi\_Print**
2. iPhone: Browser will open automatically and start application.  
\*If Wi-Fi is not automaticall redirected, open Safari and go to: selfone.com  
Android: Open Android browser and start application.  
\*For other internet browsers, go to any webpage that starts with a http:// (not https:/)
3. Click Agree & Select Image. Cancel pop-up menu and open a new window.
4. Go to:  
**http://192.168.110.1/maintenance/**  
\*Add url to your favorites.  
Login as an Administrator:  
**user name: admin password: admin**
5. Select Start Service and click OK.  
\*System status should read: Ready
6. Print a Test Image. Re-open Select Image page, click Agree & Select Image.  
Take photo or pick an image from Photo Library.  
\*iCloud drive not supported.
7. After selecting a photo, the image will be immediately uploaded to the system.  
\*Printing will begin shortly.



Go to:  
**http://192.168.110.1/maintenance/**



**Warning:**

Do not unplug the power of the NUC without shutting down the system.  
Do not uplug USB cable from the NUC to the printer w/o properly shutting down the system.

**Proper shutdown; press the NUC's power button or perform a shutdown from the web program thru the admin user.**

**For assistance with the use of the SelfOne Wireless Print Station™ please contact our Technical Support at:**  
**Phone: 888-307-0309**  
**E-mail: tsupport@meus.me.com**

- Intel® and Intel® NUC are registered trademarks of Intel Corporation in the U.S. and other countries.
- iPhone and Safari is a registered trademark of Apple Inc., registered in the U.S. and other countries.
- Android is a registered trademark of Google Inc., in the U.S. and other countries.
- All information contained herein is subject to change without prior notice.
- Other brand, product, and service names are trademarks or registered trademarks of their respective companies.
- Product appearance in this manual does not imply that Mitsubishi Electric Corporation intends to make it available in all countries where the company and its subsidiaries operate.
- Photographs are simulated images.

**Download the complete User Manual at:**  
**www.me-vis.com/SelfOne**

